

United Arab Emirates

- A constitutional federation of seven emirates:
 - Abu Dhabi
 - Dubai
 - Sharjah
 - Ajman
 - Umm al-Qaiwain
 - Ras al-Khaimah
 - Fujairah
- Formally established on December 2, 1971, with independence from the UK
- 83,600 square kilometers (51,950 sq mi)
- Capital is Abu Dhabi in the emirate of Abu Dhabi

UAE Location



Emirates Locations



Dubai Map



Dubai Facts

- Covers 1,588 sq mi, up from the original 1,500 sq mi due to land reclamation from the Persian Gulf
- Hot desert climate, avg high 106 deg in summer with high humidity
- Population 1,771,000 in 2009; only 15% are Arab UAE nationals. Rest are expatriates or descendents of expats.
- Official religion is Islam
- Oil reserves are dwindling. Economy now based on real estate/construction, trade, entrepot and financial services.

CQWW DX CW 2000

- Ali, A61AJ, wanted to win Asia, if not the world, in the Multi/Multi Category
- An international all-star team (plus me) of operators was assembled
- Significant antenna work needed to be done to make the station competitive
- A container load of equipment was shipped to Dubai from the U.S.: tower sections, yagis, coax, guy wire, guy anchors, guy grips, radial wire, etc.
- The operators put it all together, with help from Ali and his workers

International All-Star Team of Operators



K1ZM K2DM UA9BA N2MM A61AJ K3EST W2GD

5B4ADA S53R T97C Abu-Bakr

Container Load of Equipment



Antenna Work – 160M

- ON4UN, ON6WU, K1ZM and I built a four-square vertical array
- Jeff and I got this task because we would be the 160M operators in the contest
- John and Roger went to Dubai two weeks before the contest to lay out the array and to set the bases for the towers and anchors
- Jeff and I arrived one week before the contest to finish the job

Antenna Work – 160M

So What's a Four-Square

- A four-square vertical array consists of four quarter-wave vertical antennas
- The four verticals are laid out in a square that measures $\frac{1}{4}$ wavelength on a side
- A gazillion radials are laid out under each vertical
- With proper phasing, directivity can be selected along the diagonals of the square
- In the olden days phasing was accomplished by switching in various lengths of coax to make the signal arrive at each vertical in the proper phase
- Now one uses a switch box from Comtek Systems, DX Engineering, etc., to accomplish the phasing. As far as I know, the switch uses magic to do this.

Antenna Work – 160M

- The verticals at A61AJ were Rohn 25 towers with insulated bases.
- Each vertical was 120 feet of Rohn 25 plus a piece of 8-foot aluminum tubing attached to the top
- The towers were guyed with non-conductive Phillystran cable with about 15 feet of steel cable at the ground end
- Each vertical had a coax feedline that ran to the phasing box mounted on a pole in the center of the square
- The main coax feedline and a control cable ran in a trench to the shack

Antenna Work – 160M

Ali measuring for a guy anchor



Antenna Work – 160M

Roger building a rebar cage



Antenna Work – 160M

Pouring concrete for a tower base



Antenna Work – 160M

Pouring concrete for the center pole



Antenna Work – 160M

Installing insulators



Antenna work – 160M

Building the towers



Antenna work – 160M

Building the towers



Antenna work – 160M

Building the towers



Antenna work – 160M

Building the towers



Antenna work – 160M

Building the towers



Antenna work – 160M

Building the towers



Antenna work – 160M

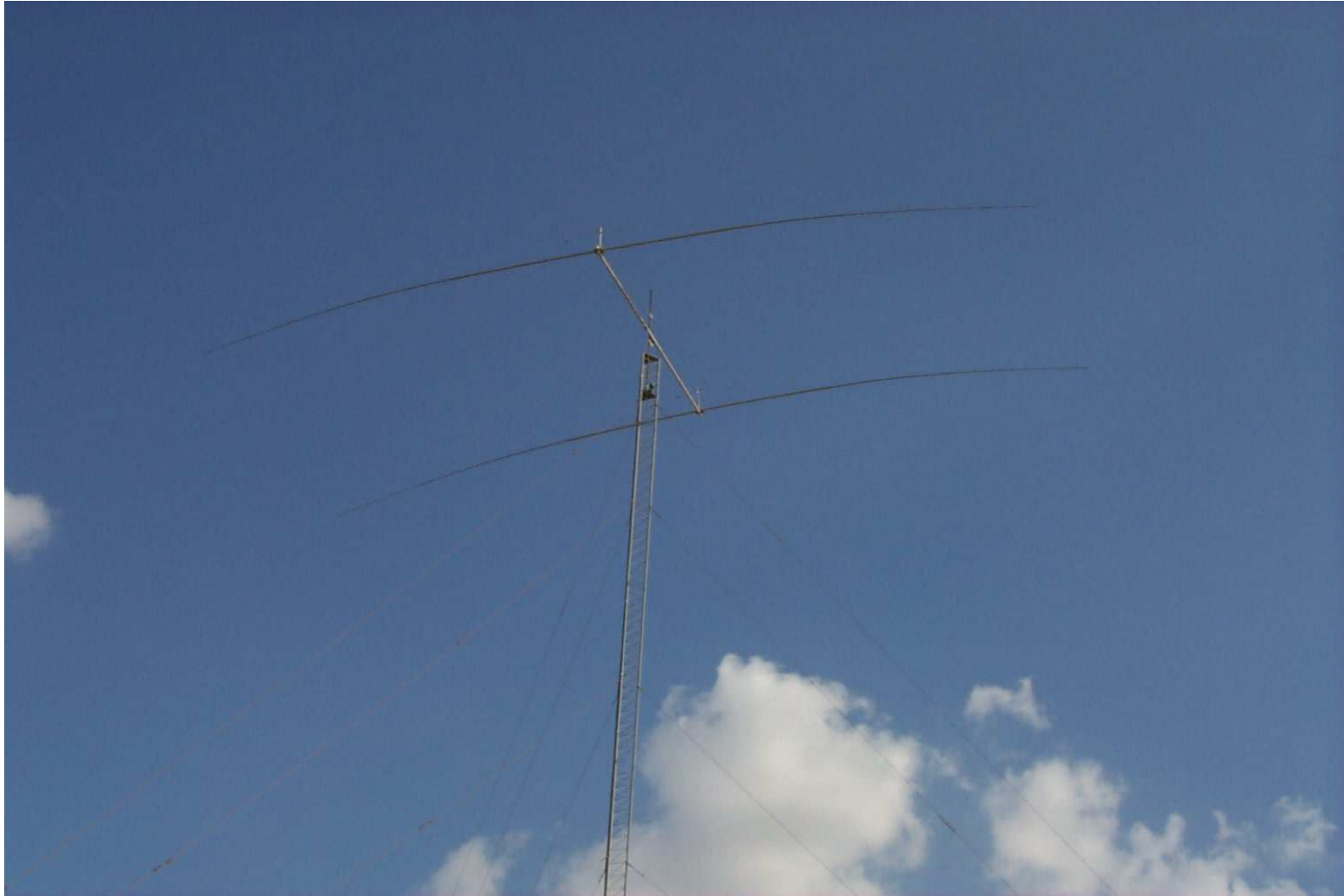
Building the towers



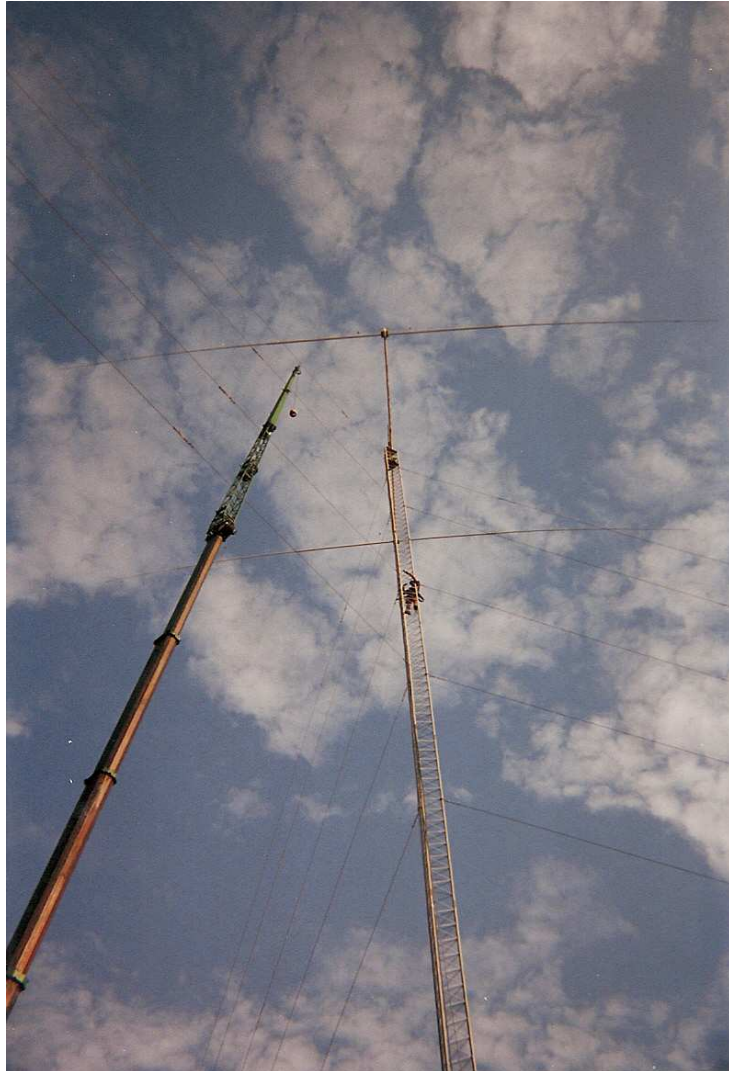
Antenna work – 80M

- The 80M yagi needed repair. The mast was bent, the rotator did not turn and the relays that switch between phone and CW did not work
- UA9BA was the primary 80M op, so he got to work on this antenna
- A crane did the heavy lifting

Antenna work – 80M



Antenna work – 80M



40M Yagi



20M Stacked Yagis



Antenna work – 15M & 10M Yagis



Antenna work – 15M & 10M Yagis



K3EST --- W2GD

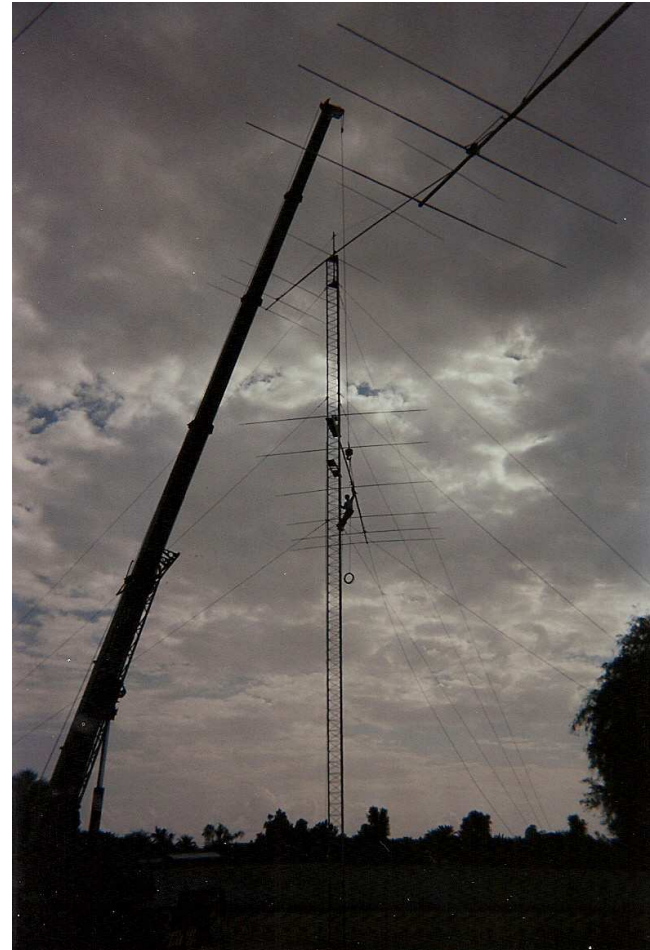


S53R

Antenna work – 15M & 10M Yagis



N2MM



Antenna Farm



Our Accommodations



Our Accommodations



Two large bedrooms, each with an en-suite bathroom

Our Accommodations



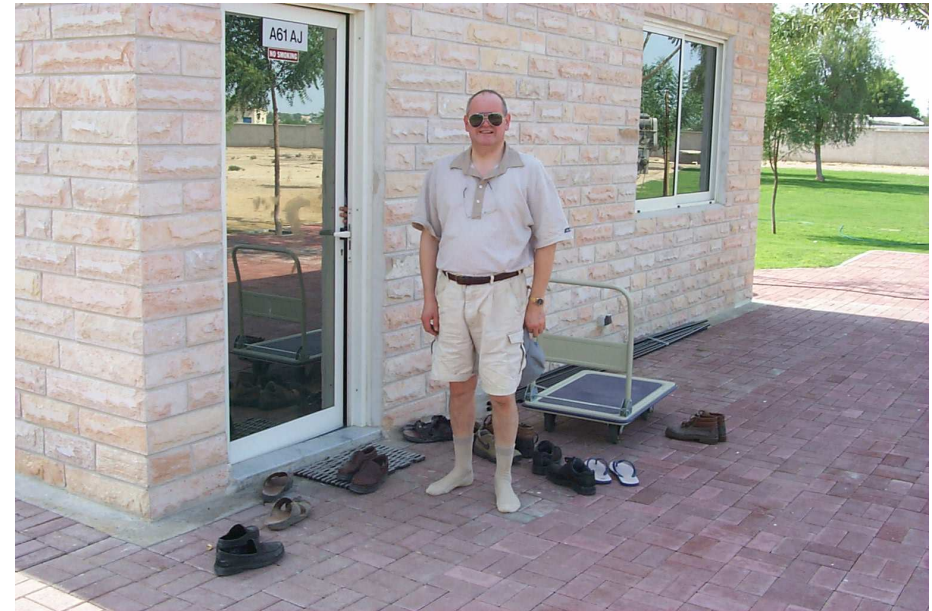
Ali had food delivered twice every day

Our Accommodations



What is everyone looking at???

The Shack



The Shack



160M --- 15M --- 80M --- 20M



40M --- 10M

The Shack



Outing to the Burj al Arab



Outing to the Burj al Arab



Outing to the Burj al Arab



Then to a Shopping Center

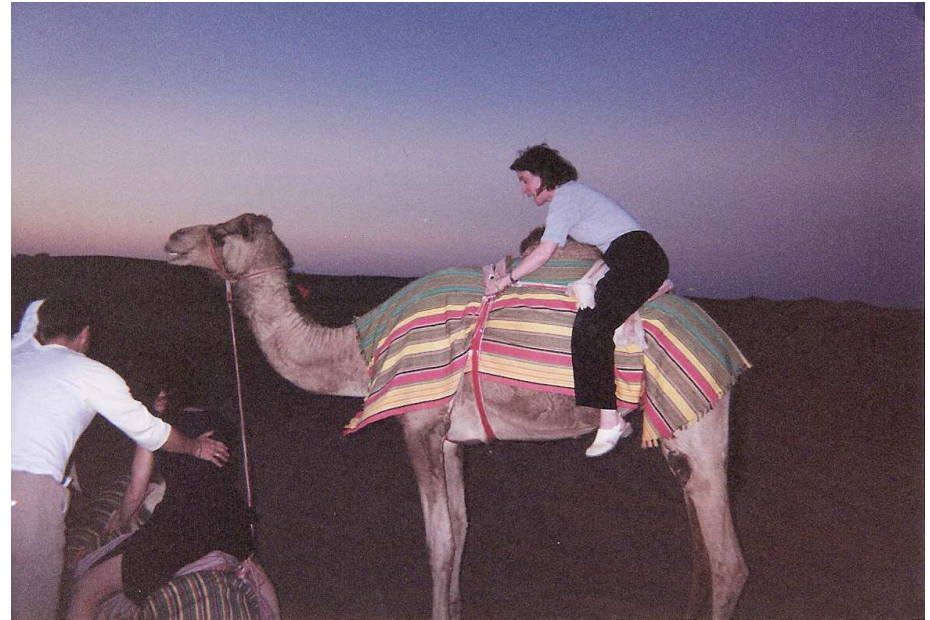


The Contest

- Began at 0000Z, which is 0400 local time in Dubai
- Over the next 48 hours our 6 stations made a total of 15,647 contacts in 772 band countries and 211 band zones
- Our final score was 36,606,846 which was good for 1st Place Asia and 3rd Place World

BAND	QSOs	ZONES	COUNTRIES	OPERATORS
160	779	27	84	K1ZM, K2DM
80	1,730	33	118	UA9BA
40	2,817	36	128	5B4ADA, T79C
20	3,592	39	154	K3EST, N2MM
15	3,307	38	148	S50R
10	3,422	38	146	W2GD

After the Contest



UA9BA + Larissa

K2RED

After the Contest



5B4ADA – K3EST – S53R – W2GD



It Ain't The Daily Sun, But...

